

CLP Pulse

“Treasure the Past, Seize the Future”

A. Background

- The CLP clock tower building was completed in 1940 and is located at 147 Argyle Street, Ho Man Tin, Kowloon. It was the headquarters of CLP until the company relocated to Hung Hom in 2012.
- The clock tower building is three stories high and was designed by the renowned architect Kwan Wing-hong (father of Nancy Kwan, the actress famous for her role as Suzie Wong in the Hollywood film *The World of Suzie Wong*, 1960). It is a symmetrical red-tiled building with wings, and the clock tower is positioned in the centre of the building.
- The clock tower building was listed as a Grade 1 historic building by the Antiquities and Monuments Office in 2018 and has now been redeveloped to become CLP Pulse – a cultural hub for the community to enjoy.



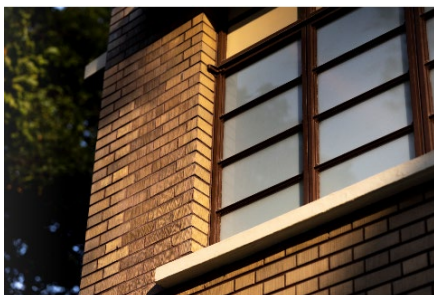
Taken in 1951



Taken in 2023

B. Architectural features

- The CLP clock tower is one of the few remaining examples of international modernist architecture in Hong Kong. Its exterior walls are covered with reddish-brown glazed ceramic tiles, making it a prominent landmark for the area.
- The design of the clock tower incorporates decorative arts that were popular in Europe at the time, combining simple, symmetrical, and geometric elements.
- The clock tower is 25 metres high. The exterior walls of the tower feature three electric turret clocks which have kept watch over the neighbourhood for decades. Four tiers of glass blocks sit above the clocks, and the eaves are reminiscent of an art deco-style Chinese pagoda.



C. About CLP Pulse

- CLP Pulse features interactive galleries and multimedia exhibitions that introduce the integral role of electricity in modernising the city and transforming it into a “smart city” of tomorrow, the connections between the Kadoorie Family, CLP and Hong Kong as well as the treasurable intangible cultural heritage of Hong Kong. The hub also provides a permanent headquarters for The Hong Kong Heritage Project (www.hongkongheritage.org), thereby enhancing access to an archive that has been encouraging and facilitating new scholarship about our local history.
- There are three exhibition galleries with a total floor space of over 870 square metres spreading out on the ground floor and first floor.
- Guided tours of the building and a wide range of thematic talks and experiential activities will be organised on a regular basis to engage the community.

(1) ElectriCity

With a collection of carefully selected artefacts, video clips, and interactive exhibits, this themed exhibition shows how CLP makes invisible electricity visible from social, historical, architectural, scientific, and environmental perspectives.



Zone	Theme
Powering to Transform	This zone captures the social and historical significance of CLP’s development to the evolution of Hong Kong.
Planning Smartly	This interactive zone details how meticulous planning ensures that CLP’s electricity supply meets the demand and changing expectations of society in different eras.
Sustainable Future	This zone envisions how decarbonisation will enable future generations to enjoy sustainable living.

(2) Our Home Our History

This exhibition tells the story of the Kadoorie Family, explaining the inextricable link between their interests and the post-war development of Hong Kong and the family's desire to preserve and share the history of our city.



The exhibition features sections titled:

- The Kadoorie Family
- Helping People Help Themselves
- Powering Industrialisation
- Beyond Hospitality
- The Hong Kong Heritage Project

(3) Traces of Human Touch

Organised by the Intangible Cultural Heritage Office, this exhibition is presented in three sections with a range of local intangible cultural heritage items.



The exhibition features sections titled:

- Apparel and Footwear
 - Ornaments and Decorations
 - Words and Sounds
- The visitors can take a break at the Café on the 1/F. Adjacent to Kadoorie Hill, visitors can appreciate the rare modernist decors of the Clock Tower at the Garden, including the exterior wall, the iron window frames, joints and glass panels. The retired 5th generation display of the Peak Tram is also a check-in point.



D. Opening hours and guided tours

- Free admission for walk-in visits on Tuesdays, Wednesdays, Fridays, Saturdays, and Sundays from 10am to 6pm.
- Complimentary guided tours and experiential activities are available for booking online.

Information and enquiries

Website : www.clpulse.com

Contact : 2678 1847