

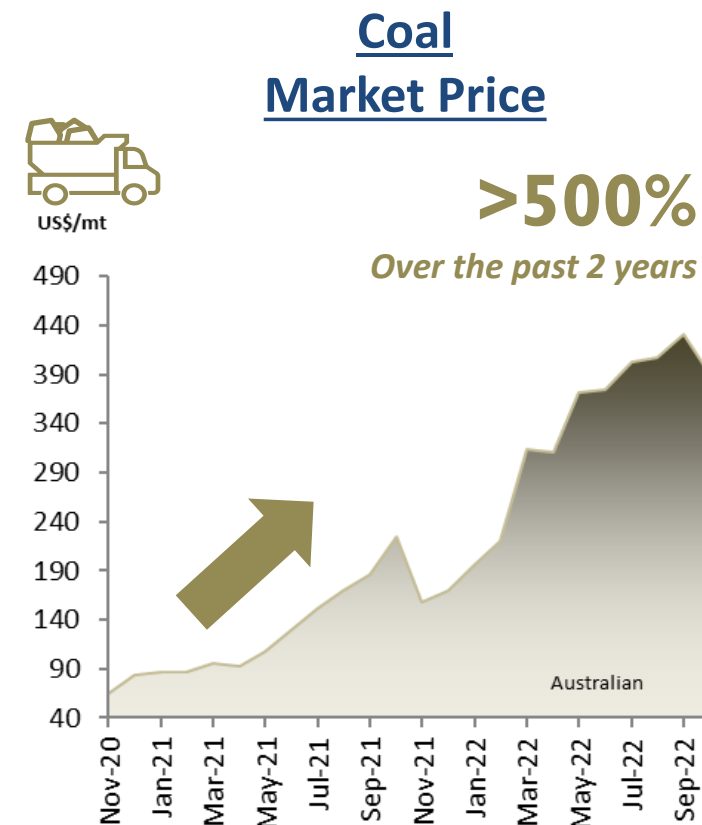
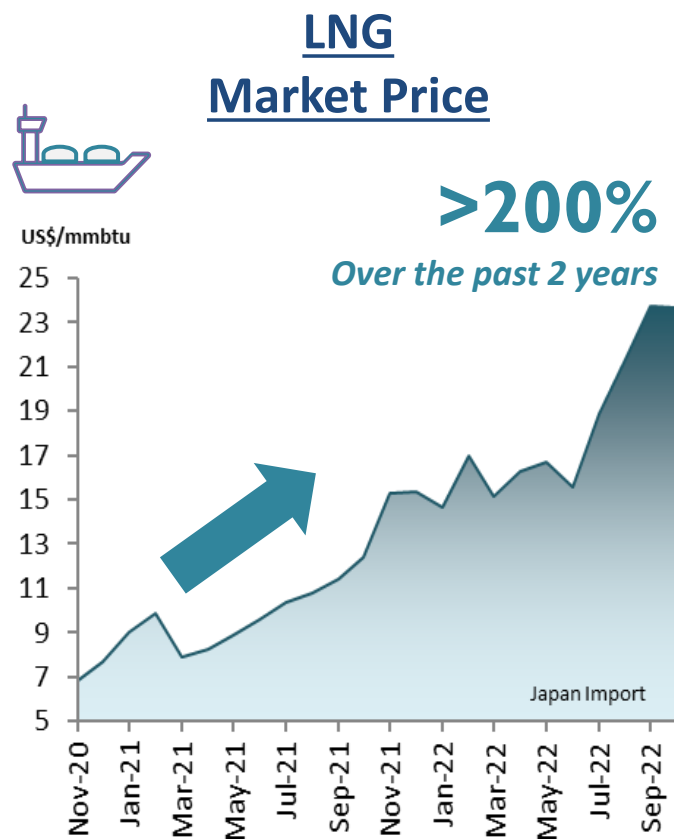
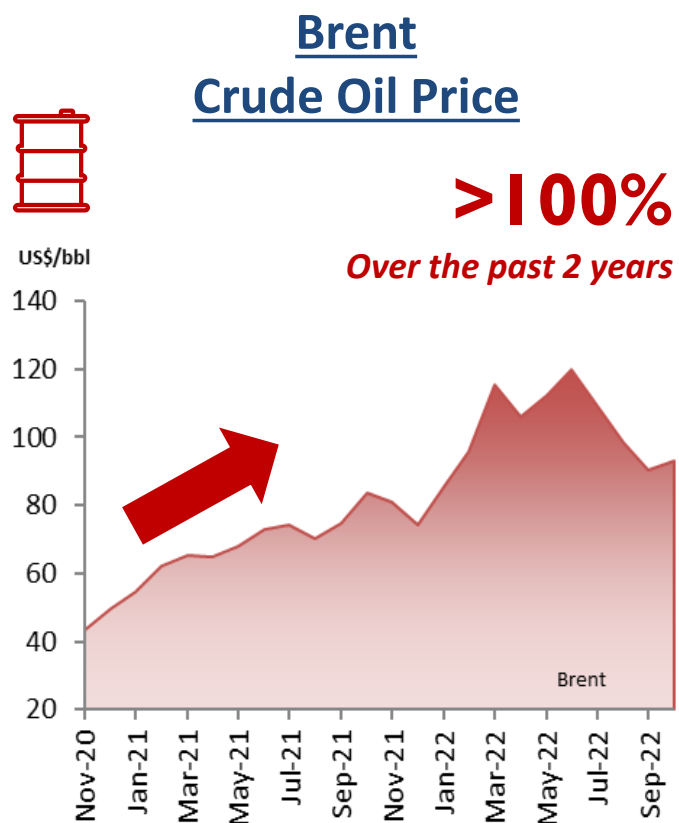
# 2023 Tariff Review

Presentation to the LegCo Panel  
on Environmental Affairs

22 November 2022

# Rising Fuel Costs

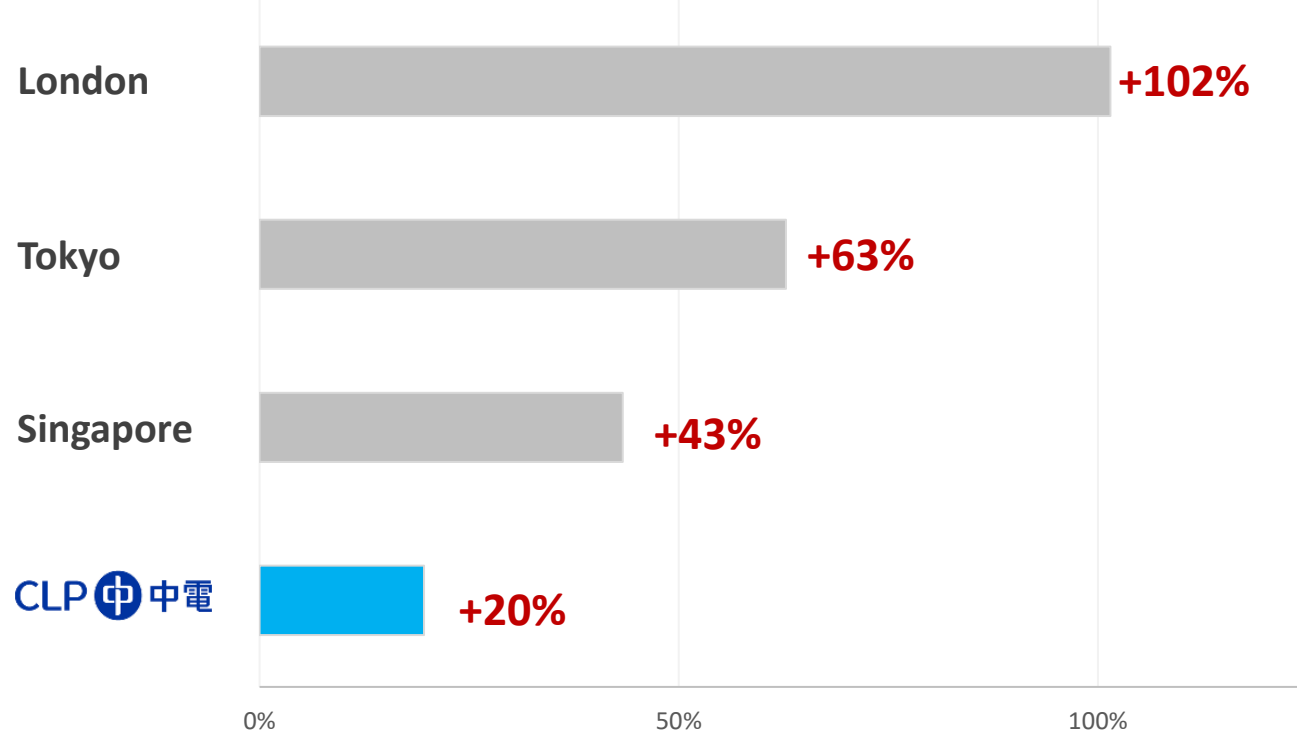
Global market fuel prices have surged since second half of 2020, driven by the pandemic hitting the global economy and the conflict in Ukraine



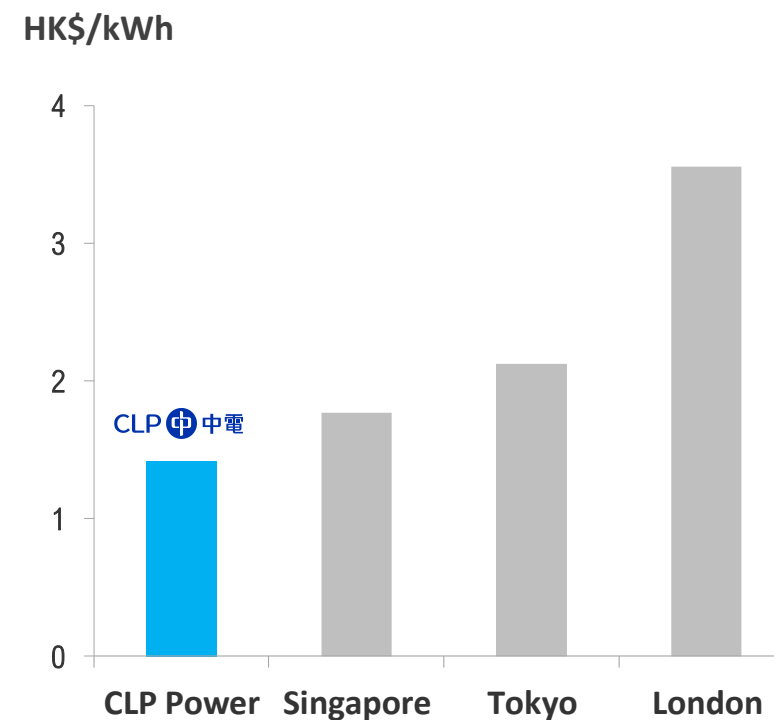
# Rising Global Electricity Prices

Electricity prices have increased by 43-102% in Singapore, Tokyo and London since January 2021

**Residential Tariff % Increase from Jan 2021 to Nov 2022**



**Residential Tariff in Nov 2022**

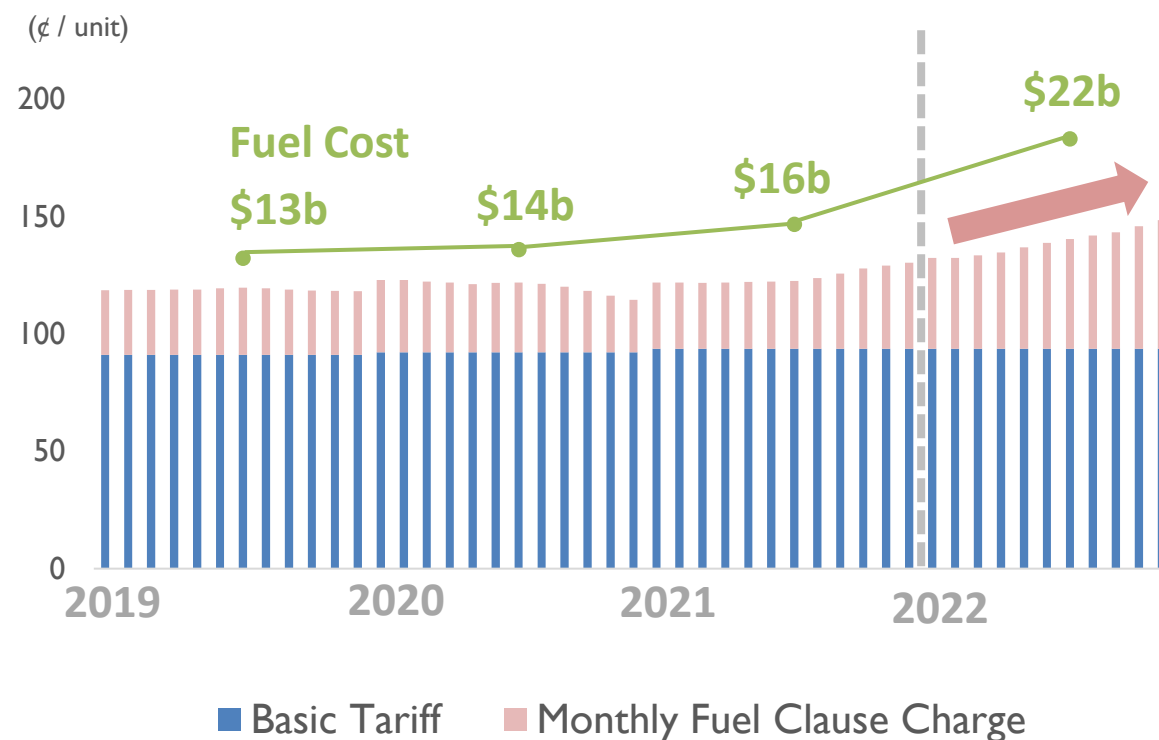


Remarks: Comparison based on monthly domestic consumption of 275kWh

# Rising Fuel Costs – Impact on CLP

- Dramatic increase in fuel costs has put upward pressure on our Fuel Clause Charge.
- Stable pricing from the Daya Bay nuclear import has reduced volatility of electricity costs for CLP customers.
- CLP utilises Fuel Clause Recovery Account (FCA) to ameliorate tariff pressure. FCA balance is expected to be stretched to an unprecedented deficit, **-HK\$3.7 billion** by end of 2022.

CLP's Basic Tariff and Fuel Clause Charge



**Average  
Basic Tariff**

**FREEZE** at 93.7 ¢/kWh

**(+0%)**

**for the third consecutive year**





# CLP 2023 Tariff

¢/kWh	Jan 2022	Now (Nov 2022)	Jan 2023	Change (Now vs Jan 2023)
Average Basic Tariff	93.7	93.7	93.7	<b>FREEZE</b>
Fuel Clause Charge	38.6	54.8	62	+7.2
Rent and Rates Special Rebate *	-1.3	-1.3	-1.3	-
2022 Special Rebate	-2.1	-2.1	-	+2.1
<b>Average Net Tariff</b>	<b>128.9</b>	<b>145.1</b>	<b>154.4 ^</b>	<b>+9.3 (+6.4%)</b>

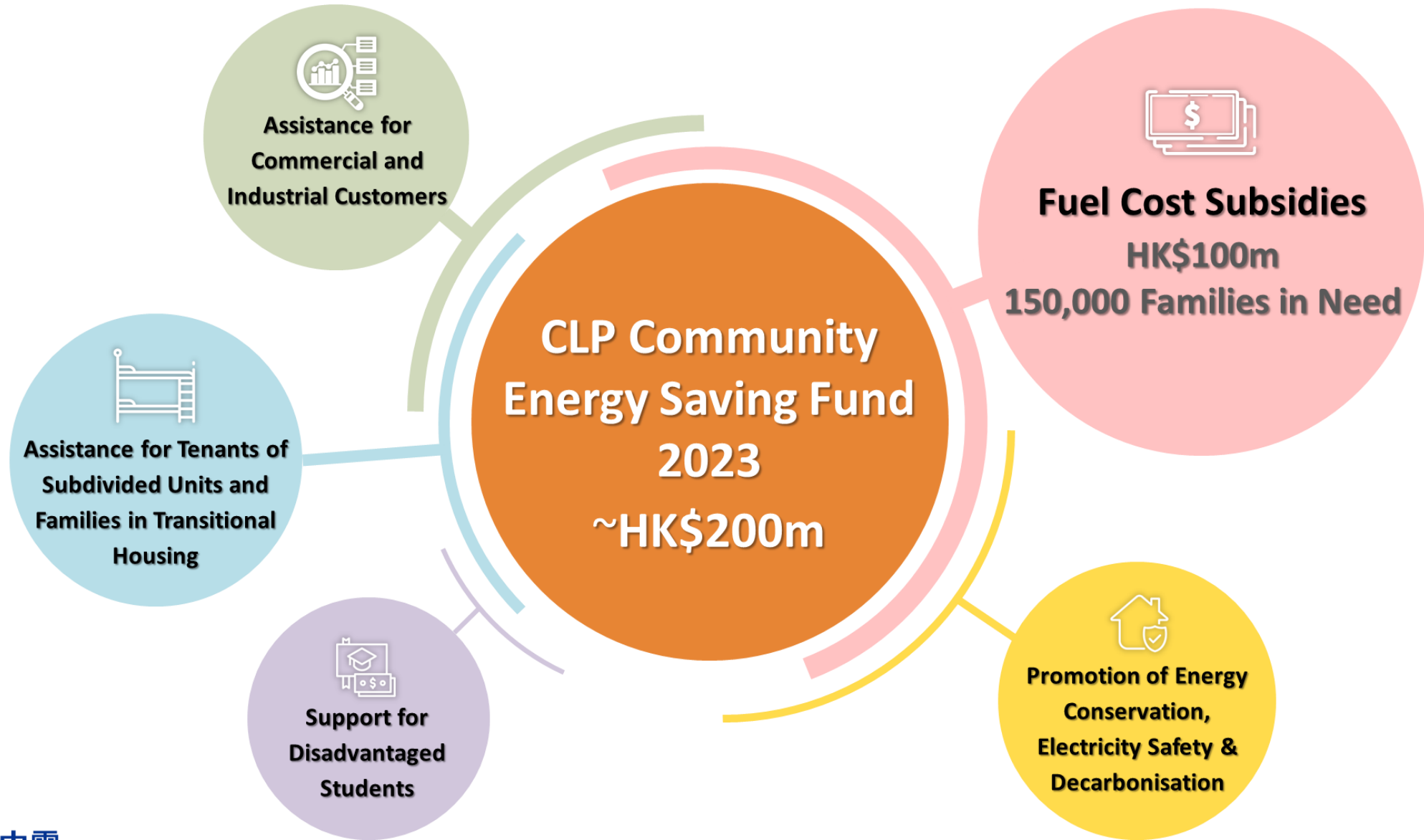
\* continue in 2023 while the rent and rates refund lasts

A new 2023 Special Energy Saving Rebate of **9.3 ¢/kWh** will be provided to the following customer bills

- **Residential Tariff** bills with bi-monthly consumption ≤ 600 kWh
- **Non-Residential Tariff** bills with monthly consumption ≤ 500 kWh

<sup>^</sup> Average Net Tariff change from Jan 2022 to Jan 2023 is 25.5 ¢/kWh (+19.8%)

# CLP Community Energy Saving Fund 2023



# CLP fully supports customers' energy saving efforts

## Smart Meters



Track electricity consumption via CLP App and receive customised consumption alerts



Receive energy saving advice and join energy saving programmes to earn rewards

## Energy Efficiency and Conservation



For business customers: energy audit services and subsidies to upgrade to energy-efficient equipment



CLP Eco Building Fund provides subsidies for energy improvement works in communal areas of residential, commercial and industrial buildings



# 2023 Tariff Review

Presentation to the LegCo Panel  
on Environmental Affairs

22 November 2022